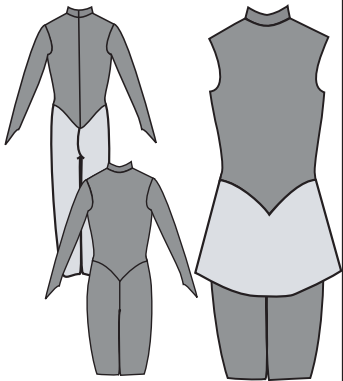


## 300-SERIES

These four Skatewear Patterns are very versatile. We have had many requests for the side seam Unitard. We decided to publish the side seam in the bodice only while the bottom section of the Unitard has the same front and back seam construction. We call this new design a "Dresstard". The Dresstard is published in the 200, 400, 500, 1000 and Kinder inset lines. The pattern comes with the Fitted Bodice. You may use any other bodice pattern you all ready have to extend your design possibilities. This can be sized for Men and Boys too.

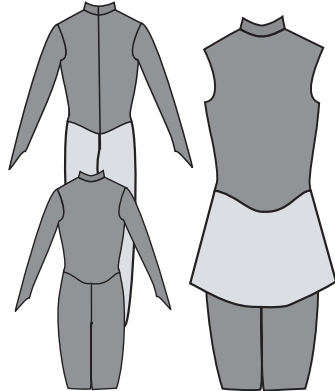
## Dresstard

### 200 DRESS-TARD



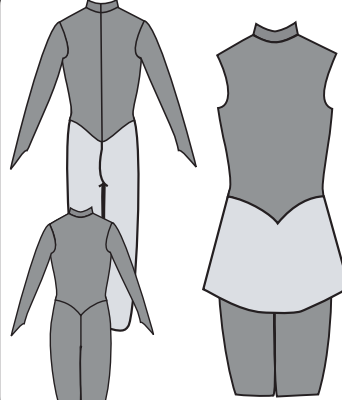
Pattern #300/200

### 400 DRESS-TARD



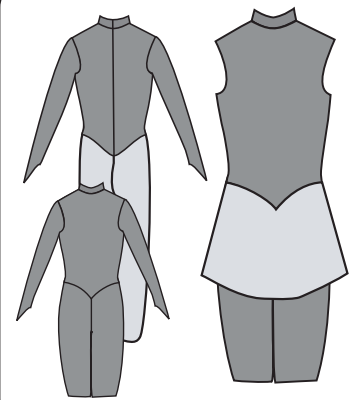
Pattern #300/400

### 500 DRESS-TARD



Pattern #300/500

### 1000 DRESS-TARD



Pattern #300/1000

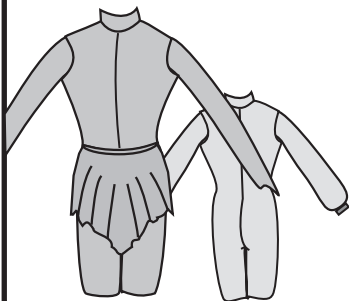
## 300-SERIES

The 300 Series is the start of our one-piece Unitards, they are really fun skatewear. The 300 and the 307 unitards can be used by girl/ladies or boys/men...cut in your own design or select one of ours. Front and back seams, side wrap (no side seams). Cut to bike length or ankle length, in the boot or over the boot. Unitards are great for gymnastics, twirlers, and for aerobicwear. Good basic design for speed skaters, both ice skaters and roller skaters

## Unitard

### Fitted Unitard

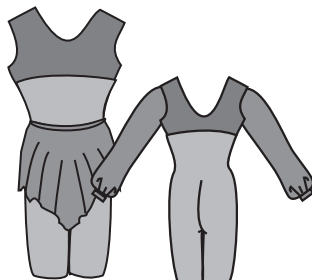
- Front or back zipper•
- Short & long full Sleeve•
- Fitted Sleeve•Pull-on skirt•
- Leg extension•



Pattern #301

### Crop Top

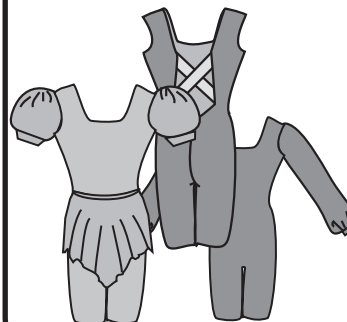
- Short Puff Sleeve•
- Long Puff Sleeve•
- Fitted Sleeve•
- Open back or Closed back•
- Leg extension•



Pattern #302

### Cross Back

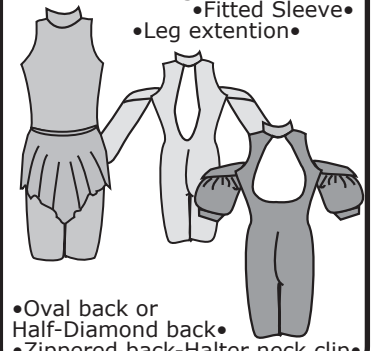
- Short Puff Sleeve•
- Long Puff Sleeve•
- Fitted Sleeve•



Pattern #303

### Bare Shoulder Halter

- Short Puff Sleeve•
- Long Puff Sleeve•
- Fitted Sleeve•
- Leg extension•

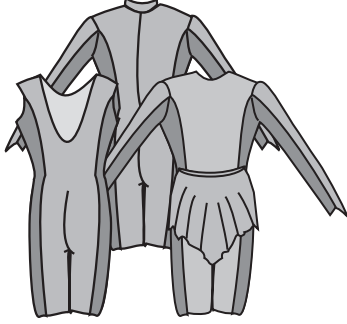


- Oval back or Half-Diamond back•
- Zippered back-Halter neck clip•

Pattern #306

### Side Inset

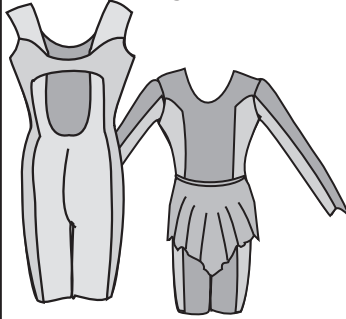
- Fitted Sleeve•
- No sleeve•



Pattern #309

### Side inset Open Back

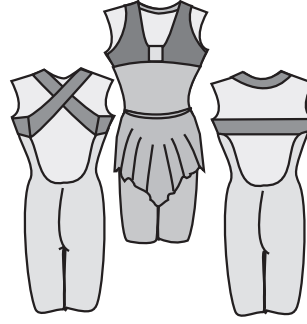
- Fitted Sleeve•
- No sleeve•
- Leg extension•



Pattern #310

### Summer Halter

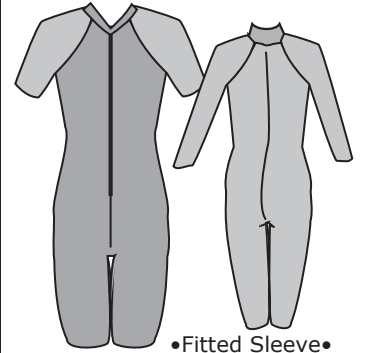
- Sleeveless pull-on•
- Leg extension•



Pattern #311

### Raglan Sleeve

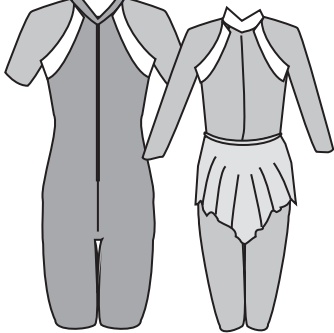
- Fitted Sleeve•
- Leg extension•



Pattern #324

### Raglan Sport

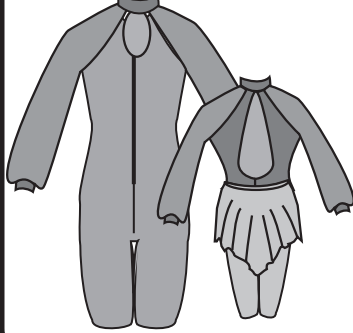
- Fitted Sleeve•
- Leg extension•



Pattern #325

### Raglan Keyhole

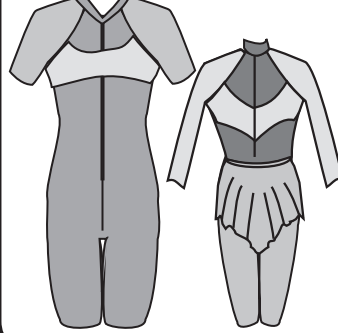
- Belled sleeve•
- Leg extension•



Pattern #328

### Raglan Crop Stripe

- Fitted Sleeve•
- Leg extension•



Pattern #327